

# The Churchman Advertiser.

OCTOBER, 1933.

## With outstretched Hands begging for Bread

The Armenians are foreigners in a foreign land.  
Work can scarcely be found.

Women and children are the greatest sufferers.

We need

extra help for Aged Widows' Home,

Special help for sick children,  
especially T.B. cases,

Additional help for Bread and Milk.

**PLEASE DO NOT FAIL THEM.**

## Armenian Massacre Relief

at the office of

**Bible Lands Missions' Aid Society**

**76<sup>P</sup> STRAND, LONDON, W. C. 2.**

**HARRY FEAR, Esq., J.P., Treasurer.**

**Rev. S. W. GENTLE-CACKETT, Secretary.**

**Publications obtainable from the**  
**CHURCH BOOK ROOM**  
**7 WINE OFFICE COURT, E.C.4.**

---

- ABOUT THE FEET OF GOD.** By Canon E. R. PRICE DEVEREUX, M.A., LL.B. Paper cover, 3d.
- AT THE LORD'S TABLE.** A Manual for Communicants, with the Communion Service. By the BISHOP OF CHELMSFORD. Cloth gilt, 1s. 6d.; cloth, 1s.
- A COMMUNICANT'S MANUAL.** By the BISHOP OF MIDDLETON. 1d., or 7s. per 100.
- COMMUNICANTS' UNION SERVICE.** Arranged by Canon A. E. BARNES-LAWRENCE. 1d., or 5s. per 100.
- THE DAILY WALK.** Devotions for every day of the year. Compiled by CORNELIA, LADY WIMBORNE. 5s. and 7s. 6d.
- DEVOTIONAL STUDIES IN THE HOLY COMMUNION SERVICE.** Six Sermons by Rev. A. ST. JOHN THORPE, M.A. 6d.; cloth, 9d.
- FAMILY PRAYERS.** By Rev. A. F. THORNHILL, M.A. Limp cloth, 6d.; paper cover, 2d.
- FATHER AND SON.** A Boy's Prayers for a Week. By Rev. R. R. WILLIAMS, B.A. Cloth, 9d.; dukeen, 3d.
- A GIRL'S WEEK OF PRAYER.** By E. M. KNOX, late Principal of Havergal College, Toronto. 2d.
- HELPS TO THE CHRISTIAN LIFE.** A Manual for Communicants with the Communion Service. By Rev. T. W. GILBERT, D.D. Leather, 2s.; cloth gilt, 1s. 6d.; cloth, 1s.; paper cover, 6d.
- THE HOLY COMMUNION.** Its Institution, Purpose, Privilege. By Canon A. E. BARNES-LAWRENCE. Cloth gilt, 1s. 6d.; cloth limp, 9d.; paper cover, 6d.
- MY DECISION.** By Rev. W. J. LIMMER SHEPPARD, D.D. 7s. 6d. per 100.
- MY FIRST COMMUNION.** A simple explanation of the Sacrament and the office of the Holy Communion, together with the Communion Service. By Rev. A. R. RUNNELS-MOSS, M.A., with a preface by Bishop E. A. KNOX. Cloth gilt, 1s.
- CHURCH BOOKLETS.** 1d. each or 7s. per 100.
- Time to Think.** By E. B. B.
- Conversion.** By Bishop H. C. G. MOULE.
- Holy Baptism.** By Bishop H. C. G. MOULE.
- Holy Communion.** By Bishop CHAVASSE.
- Why go to Church?**
- Why Stay Away from Holy Communion?**
- Bible Reading.** By W. GUY JOHNSON.
- A Talk about your Baby's Baptism.** By Rev. B. HERKLOTS.
- Protestant and Catholic: Can we be Both?**  
By Preb. E. A. EARDLEY WILMOT.

---



---

# NATIONAL CHURCH LEAGUE

(INCORPORATED)

For the Defence and Promotion of the  
Reformed Faith of the Church of England.

**"CATHOLIC. APOSTOLIC. REFORMED. PROTESTANT."**

---

*President :*

The Right Hon. SIR THOMAS INSKIP C.B.E., K.C., M.P.

*Chairman of Council :*

Rev. T. W. GILBERT, D.D.

*General Secretary :*

W. GUY JOHNSON.

*Offices :*

Dean Wace House, Wine Office Court, Fleet Street, E.C.A.

**T**HE NATIONAL CHURCH LEAGUE conducts an active propaganda work on constructive and educational lines, to maintain the Character of the Church of England as the National Church and also as one of the Reformed Churches of Christendom. Its activities include :—

Providing lectures and sermons on subjects dealing with the Bible, the Prayer Book, Church History, Church Doctrine and current Church questions generally.

A large Book Room and Publishing Depot at Dean Wace House.

The organization of the constituency in the Dioceses for promoting the return of suitable candidates on Church bodies comprised within diocesan organization.

A Patronage Trust.

A Fund for assisting candidates in their training for Holy Orders.

The provision of material for work among young people, Sunday Schools, etc.

**O**PPORTUNITIES for an extension of the work of the National Church League were seldom more promising than they are to-day, but they await the active support of Church men and women in the parishes.

**T**HE help of individuals is needed, not only in the formation of local branches of the National Church League, but to ensure that the Branches shall exert a definite influence upon local Church affairs, especially in matters of Diocesan interest.

**A**LL Churchpeople who approve of the League and its principles are urged to join it themselves, to lead others to join, and to send donations for the furtherance of the work. Funds are urgently needed.

\* *Subscriptions : Governors, £1 1s. ; Members, 7s. 6d. (Clergy, 5s.) ;*

*Associates can be enrolled at a minimum subscription of 1s.*

The "Church Gazette" (Monthly), 2/6 a year, is sent post free to Subscribers of 7/6 and over.

The "Churchman," 1/6 quarterly, 8/- per annum, post free.

Cheques should be made payable to NATIONAL CHURCH LEAGUE and crossed "Williams Deacon's Bank."

---



---

## Longing for the evening

Those for whom we plead—incurable sufferers of the **middle class**—are victims of compulsory inactivity. The hours drag slowly. Each morning finds them longing for the evening and hoping that the night may bring them rest.

## Longing for the morning

When night falls, to many of them sleep does not come, or comes but fitfully. Pain and dread of the future keep them on the rack.

Will you help this beneficent work, financially, by sending an annual subscription or a generous donation?

Contributions gratefully acknowledged by the Secretary.

## British Home and Hospital for Incurables (Streatham.)

Offices : 73 CHEAPSIDE, LONDON, E.C.2

## The Church of England Newspaper

HAS NO EQUAL

in its long list of

eminent contributors

The C.E.N. is published in the  
interest of all church people

Every Friday Price twopence

A Specimen copy of current issue will be  
sent free to any "Churchman" reader on  
application to:

The Manager, C.E.N.  
17 Tavistock St., London, W.C.2.

## CHURCH PRINTING.

*We specialise in*

PARISH MAGAZINES.  
REPORTS.  
BOOKLETS.  
SERMONS.  
HYMN SHEETS.  
WEEKLY SERVICE TABLES.  
POSTERS, ETC., ETC.

GOOD WORK AT MODERATE  
PRICES. ESTIMATES FREE.

*Every care taken.*

A trial order respectfully solicited  
Send for Illustrated Folder.

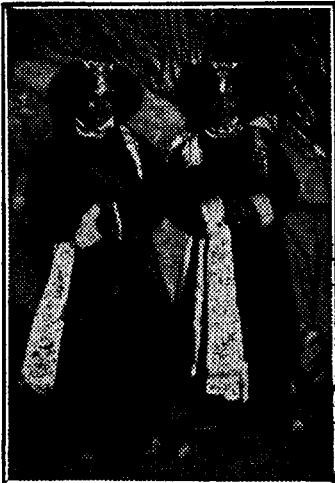
**THE MONKWELL PRESS,**  
PRINTERS AND STATIONERS,  
6 Windsor Court, Monkwel St.,  
London, E.C.2

CONTENTS.

	PAGE
NOTES AND COMMENTS .. .. .	231
The Duty of Evangelical Churchpeople. Justice to the Older Evangelicals. The Vitality of Evangelicalism. Books Recommended for Study. An Unnecessary Controversy.	
OUR ANGLICAN HERITAGE. By the Rev. Canon A. J. Tait, D.D.	235
A MID-VICTORIAN HOME. By the Rt. Rev. Bishop E. A. Knox, D.D. .. .. .	242
HOW THE REFORMATION BEGAN IN ENGLAND. By John Knipe .. .. .	253
ST. MARY'S LOCH RE-VISITED. By the Ven. W. L. Paige Cox, M.A., B.D., Archdeacon of Chester...	264
THE BISHOP OF LONDON'S OVERSEAS JURISDICTION. By the Rev. F. Bate, D.D. .. .. .	270
THE PAPAL BULLS FOR THE INVASIONS OF ENGLAND AND IRELAND. By the Rev. F. R. Montgomery Hitchcock, D.D...	275
CHURCH BRIEFS. By the Rev. Harold Smith, D.D. .. .. .	281
THE DUTCH REFORMED CHURCH. By the Rev. F. E. Keay, M.A., D.Litt. Lond., British Chaplain, Amsterdam .. .. .	285
REVIEWS OF BOOKS .. .. .	290
The Eucharistic Doctrine of the Oxford Movement. The Conception of God in the Philosophy of Aquinas. Authority and Reason in the Early Middle Ages. The Formation of the Gospel Tradition. Evangelical Influence in English Life. The Roman Catholic Church and the Church of England. Ancient Hebrew Social Life and Custom as Indicated in Law, Narrative and Metaphor. The Heart of the Bible. The Seventh and Sixth Century Prophets. The New Knowledge About the Old Testament. John Wesley and the Eighteenth Century.	
NOTES ON RECENT BOOKS .. .. .	308

*All articles appearing in THE CHURCHMAN are the copyright of the Proprietors and must not be reprinted without permission.*

**Past : Present : Future :**



NATIVE GIRLS.

**THE PAST.** The history of the Moravian Missions is one of splendid achievement and example. All sections of the Protestant Church owe a vast debt to its missionaries for their grand record of self-sacrificing effort.

**THE PRESENT** calls for service have to be met in earth's darkest places in spite of existing financial stringency and difficulties. Please send help! The deficit in the accounts last year was over £1,600.

**THE FUTURE** must be considered. A new generation of liberal supporters is needed to continue the work which has now been carried on for over two hundred years.

Contributions will be gratefully acknowledged by Charles Hobday, Esq., Chairman and Honorary Secretary, 70a Basinghall Street, London, E.C.2.

**The London Association in aid of Moravian Missions**

(President : Sir George H. Hume, J.P., M.P., L.C.C.)

Send 1s. 3d. to above address for a copy of "ADVANCE GUARD"—the history of 200 years' Moravian Mission Work.

# CHRISTIAN WORLD PULPIT

Volume 123 (January to June, 1933)  
NOW READY

## THE CREAM OF ENGLISH AND AMERICAN PREACHING

Universally accepted as the best publication  
of its kind.

All the best thoughts and subjects dealt with  
by leading men of the Church of England and  
the Free Churches.

*PUBLISHED WEEKLY TWO PENCE  
PER COPY*

*Monthly (four or five weekly editions), ten pence.  
Half-yearly volumes, beautifully bound, 7/6,  
postage nine pence.*

FREE COPY OF WEEKLY EDITION ON RECEIPT OF  
POST CARD

## CHRISTIAN WORLD PULPIT

THE CHRISTIAN WORLD LTD.

110-111 FLEET STREET, LONDON, E.C.4